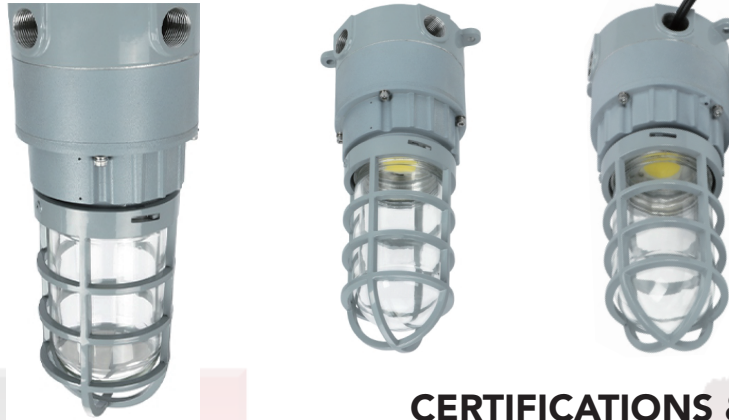


LED EXPLOSION PROOF LIGHT

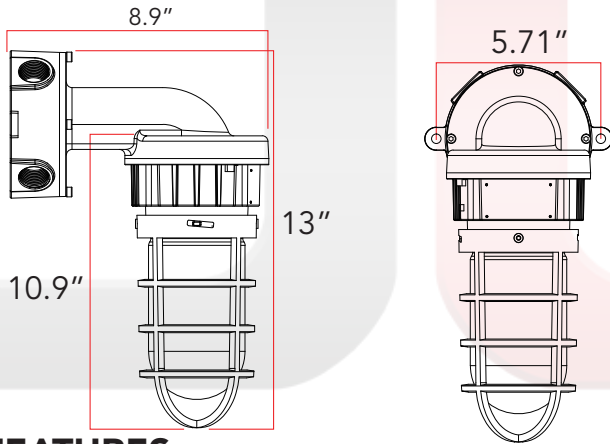
JLX - O Series Mini Tunnel Light



This LED Explosion Proof Light can provide general illumination in hazardous locations such as oil refineries, gasoline loading docks, distilleries, pumping stations, mines, vessels, paint manufacturing plants and other high humidity, high temperature, and dusty locations.



DIMENSIONS



CERTIFICATIONS & RATINGS



- NEMA 3, 4X, IP66
- UL1589A
- CSA C22.2 No. 137/No.250.0
- IECEx
- ATEX

Class I, Division 2, Groups A,B,C,D
Class II, Division 2, Groups F,G
Class III

FEATURES

- Small & Lightweight Copper-Free Aluminum Housing
- High Vibration & Impact Resistant
- Thermally Stable Toughened Glass Lens
- IP66 Rating
- 50,000 Hour Life
- 5 Year Warranty
- 140 Lumens per Watt
- Multiple Mounting Options

COMMON TECHNICAL DATA

Color Temperature	2200K – 7000K
Beam Angle	40°/60°/90°/120°
CRI	80
Operation Temperature	-4°F to 140°F
Lumen Efficiency	More than 140 Lumens per Watt
Input Voltage	AC 100-277V/220-480V
Frequency	50-60Hz
Rated Life	50,000 Hours
LED Type	Cree LED Chips
Housing	Copper Free Aluminum & Glass Lens

WARRANTY

This product has a warranty for a period of 5 years from the date of purchase. The warranty is invalid in the case of improper installation, tampering, or removal of the Q.C. date label. Installation in an improper working environment or installation not according to the current edition of the National Electric Code also invalidates the warranty. Should this product fail during the warranty period, it will be replaced free of charge, subject to correct installation and return of the faulty unit. JL® does not accept responsibility for any installation costs associated with the replacement of this product. This warranty is in addition to the statutory rights in the country of purchase. JL® reserves the right to alter specifications without

LED EXPLOSION PROOF LIGHT

JLX - O Series Mini Tunnel Light



PRODUCT SPECIFICATION

Product Number	Watt	CCT	Lumens	Voltage	CRI	Warranty
JLX-10W-OYZDA	10	2200K – 7000K	1400	AC100-277/220-480V	80	5 Years
JLX-15W-OYZDA	15	2200K – 7000K	2100	AC100-277/220-480V	80	5 Years
JLX-20W-OYZDA	20	2200K – 7000K	2800	AC100-277/220-480V	80	5 Years
JLX-30W-OYZDA	30	2200K – 7000K	4200	AC100-277/220-480V	80	5 Years

ORDERING GUIDE

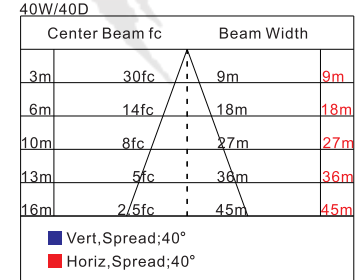
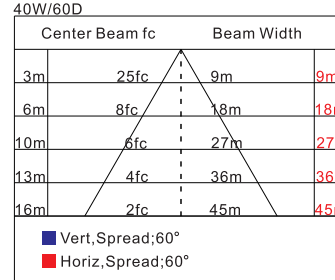
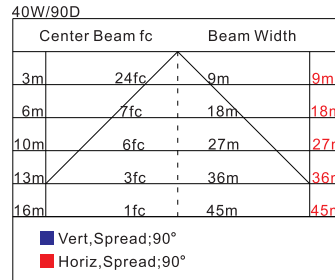
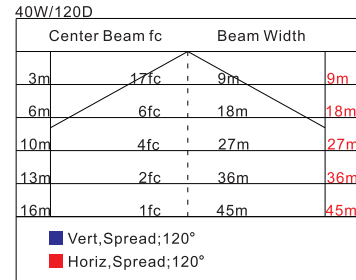
“O”=Product code, “Y”=D or N:Dimmable or non-dimmable “Z”=CCT, from 2200-7000K

“D”=Beam angle, D40 for 40°, D60 for 60°, D90 for 90°, D120 for 120°

A for glass info. blank for flat glass, c for spherical glass.



LIGHT DISTRIBUTION



CAUTION

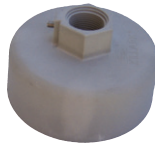
- Risk of fire- make sure power is OFF before installation.
- Risk of electric shock- make installation with gloves.
- All wiring needs to be performed per National Electrical Code and local code by a qualified electrician.
- These lamps can be used with a light dimmer.
- High temperatures inside luminaire make certain line voltage corresponds with ballast's primary voltage.
- If the lamp or luminaire exhibits undesirable operation (i.e. buzzing, flickering, etc.), immediately turn off power and remove the lamp from luminaire and contact manufacturer.
- Luminaires should not be installed in narrow space to guarantee enough air convection.
- Do not make mass installation before sample testing.

LED EXPLOSION PROOF LIGHT

JLX - O Series Mini Tunnel Light



OPTIONAL ACCESSORIES



Pendent



Ceiling/Wall



Wall Elbow



Ceiling/Wall
(Interior Detail)



Incandescent



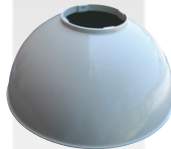
Fluorescent



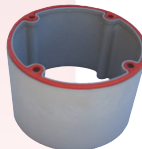
Globe



Guard



Reflector



Extension



Gray Blank



Clear

MOUNTING OPTIONS

